



















tm
Dream Wood
@ Jolshiri Abashon

tm assets



WELLNESS FEATURES

 5 KATHA PLOT	 40' WIDE ROAD	 SWIMMING POOL
 MEZZANINE FLOOR	 DOUBLE HEIGHT ENTRANCE	 JACUZZI
 CAR PARKING	 NEAR LAKE	 PRIVATE FITNESS CENTER
 WALKING TRACK	 GREEN ZONE	 ROOFTOP GARDEN AREA
 OPEN TERRACE	 GRAND RECEPTION	 SAUNA
 VISITOR LOUNGE	 PRAYER ROOM	 BBQ CORNER

THE
SUMMIT OF
LUXURY

introduction

TM Assets Ltd. is a prominent and rapidly expanding real estate company that specialises in apartment building and craftsmanship. TM Assets Ltd is committed to innovation, goodness, sustainability, excellence, and integrity. In our pursuit of exceeding consumer expectations through our business practices, we are instilling a fresh energy in the real estate industry. This highly esteemed and affluent neighbourhood at Jolshiri Abashon is a perfect fit for TM Assets Ltd's forward-thinking ethos.

ABOUT TM DREAM WOOD

TM Dream Wood in Jolshiri Abashon gives you the taste of an elite lifestyle. Enter into a world of comfort and convenience with its splendid double-height entrance. Each 4-bedroom apartment has been designed with high-end amenities, brimming with the attractive features of a Smart Home. Thus, each apartment is perfect for a premium living setting. The spacious and stunning 2850 sft apartments will make socializing with friends and family even more enjoyable. Find the finest luxuries of life at TM Dream Wood !



AT A GLANCE

DREAM WOOD
NIGHT VIEW



SECTOR : 12



ROAD NO. : 408



PLOT NO. : 11



LAND SIZE : 05 KATHA



FLAT SIZE : 2850/5700 SFT. (Single/Duplex)



BUILDING TYPE : G+M+8



BEDROOMS : 04

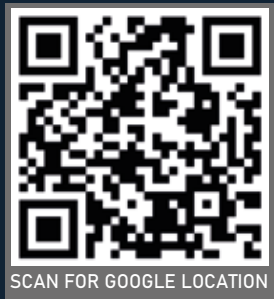


PASSENGER LIFT : 01



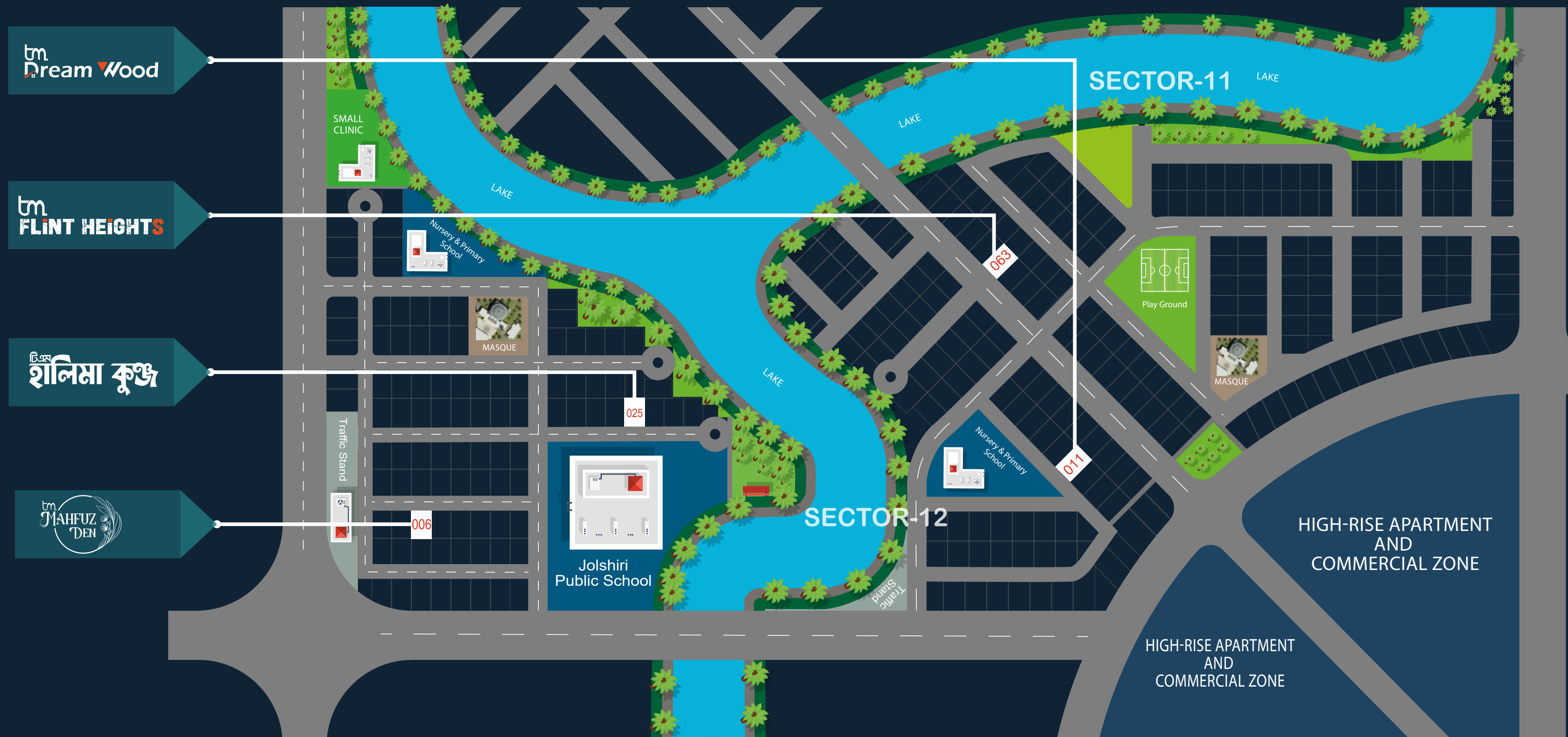
CAR PARKING : 08

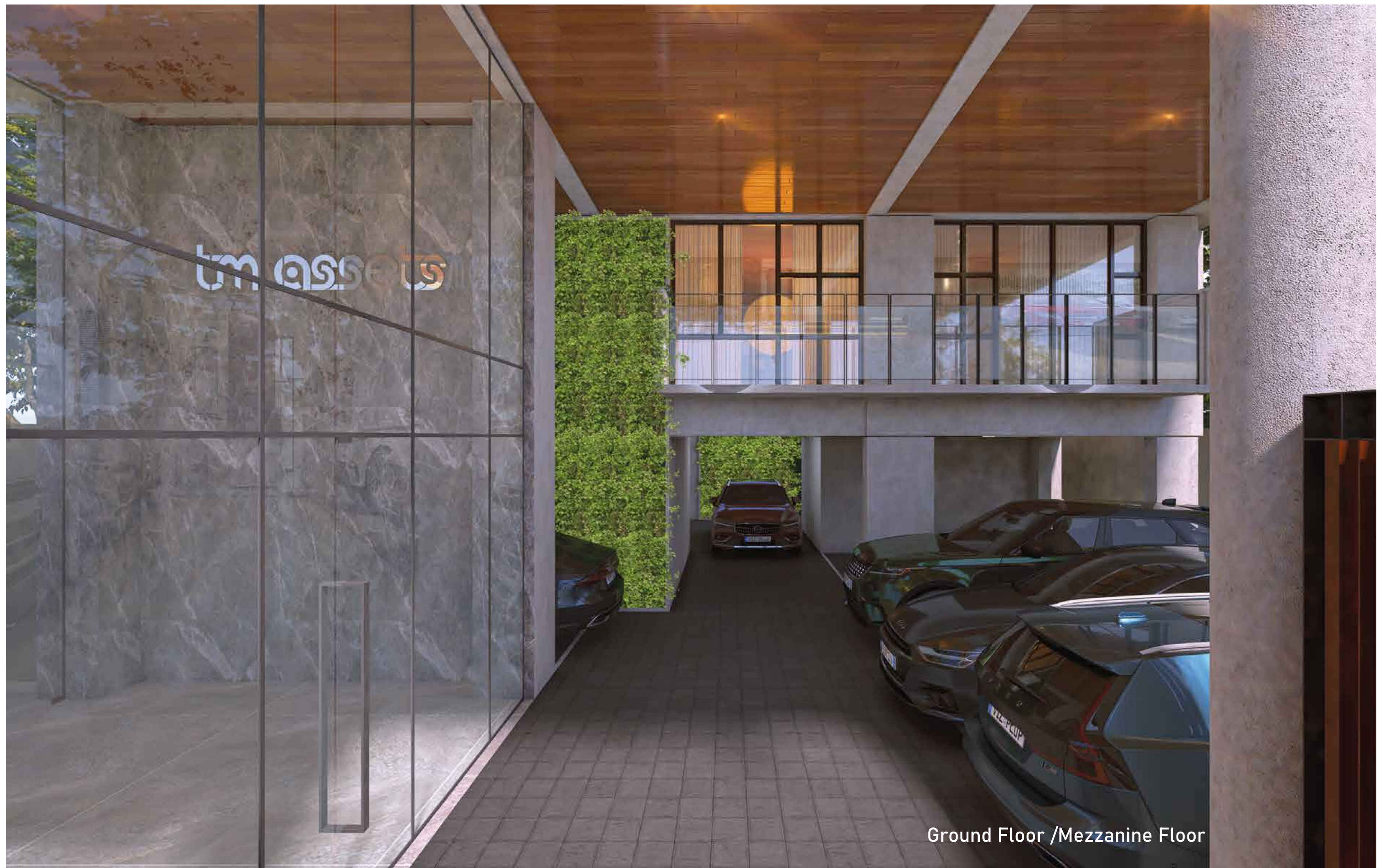




LOCALE OF PROJECT

- Nursery and Primary School
- Lake
- Urban Green
- Mosque
- Park
- Small Clinic



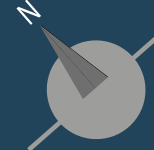
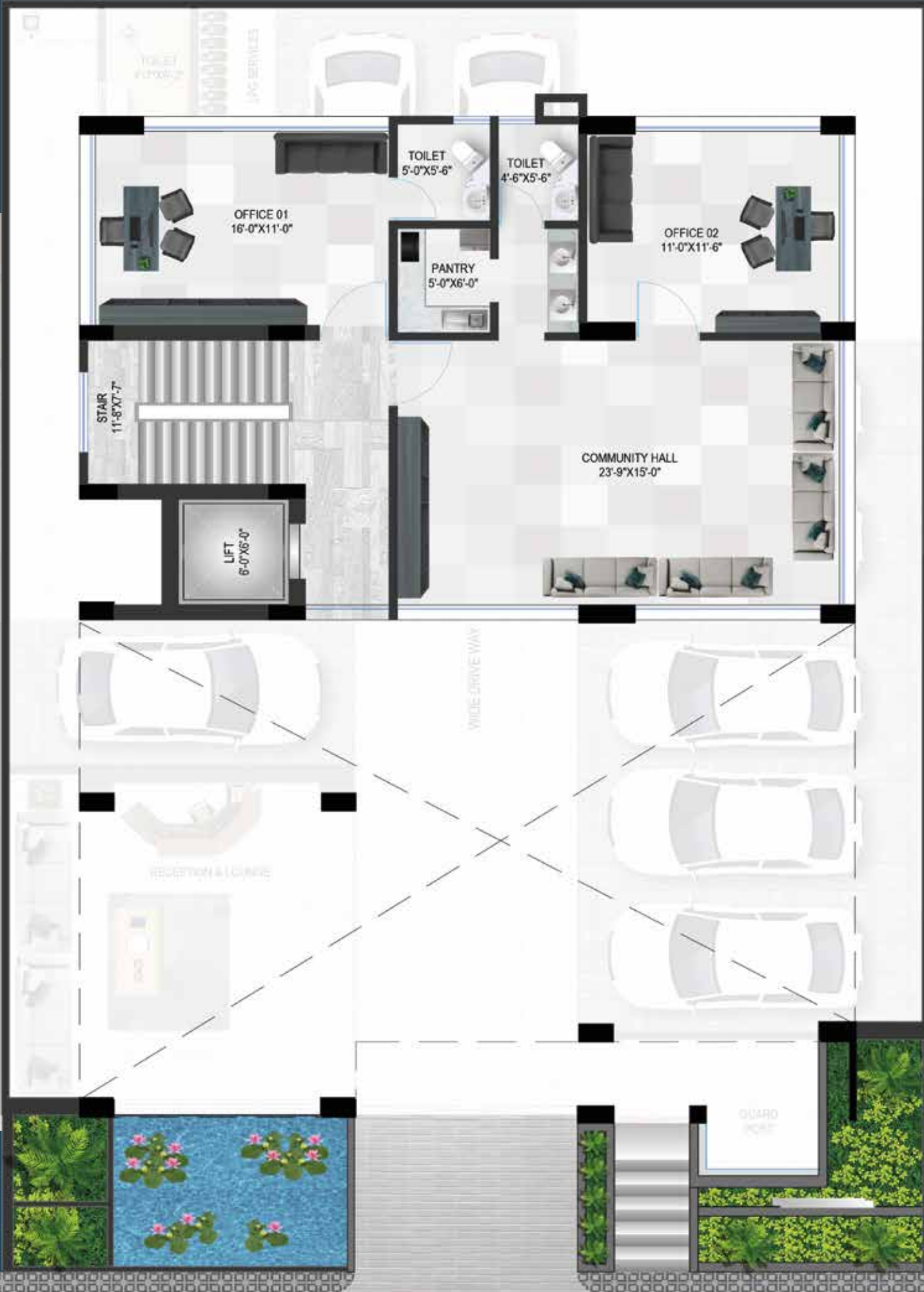


Ground Floor /Mezzanine Floor

GROUND FLOOR PARKING PLAN



MEZZANINE FLOOR PLAN



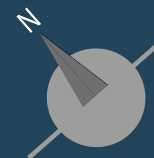
TYPICAL FLOOR PLAN (2850 SFT)

1ST, 3RD, 5TH FLOOR)



TYPICAL FLOOR PLAN (2850 SFT)

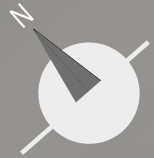
(2ND, 4TH & 6TH FLOOR)



DUPLEX PLAN (LOWER LEVEL)



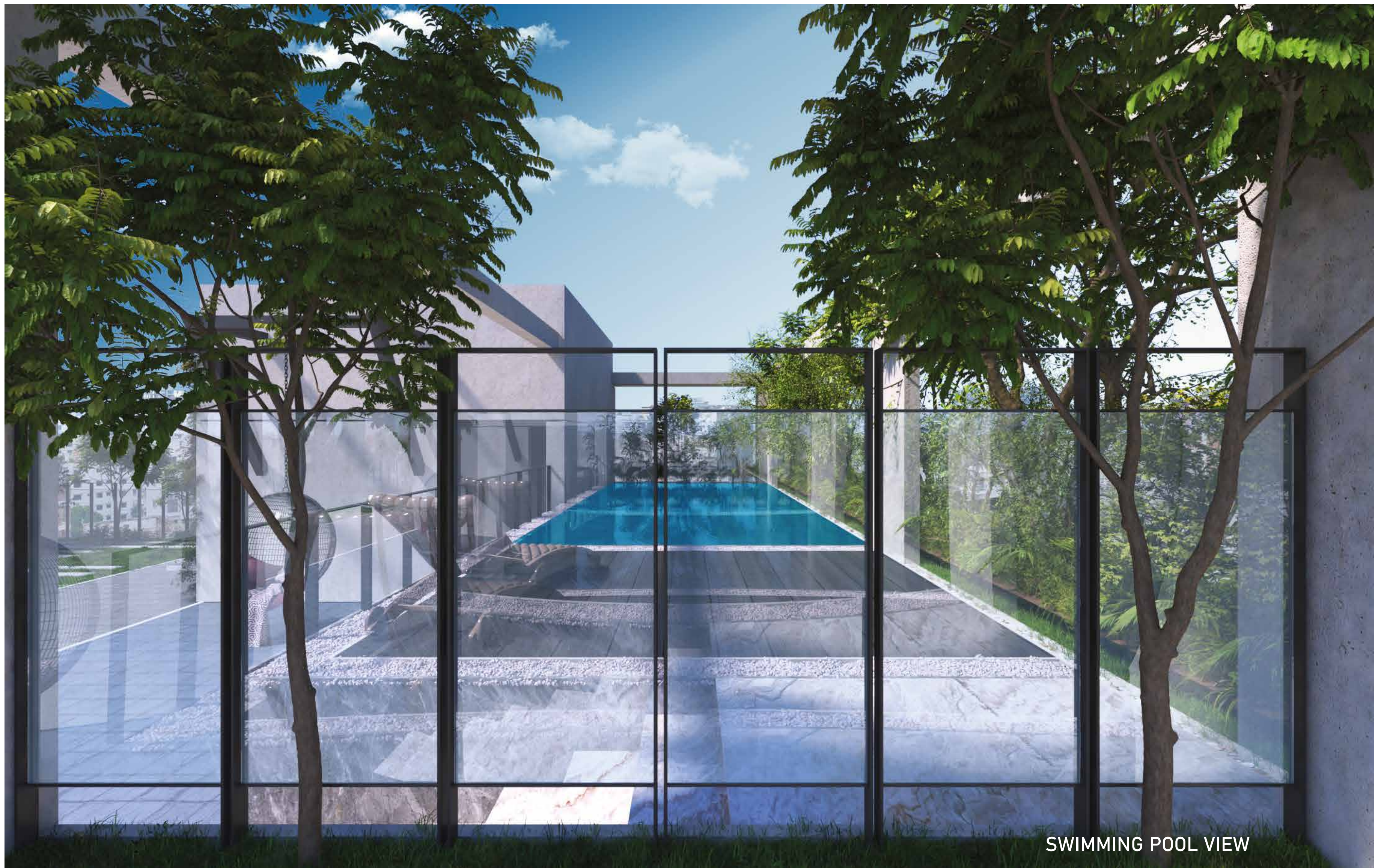
DUPLEX PLAN (UPPER LEVEL)



ROOFTOP VIEW

ROOFTOP PLAN





SWIMMING POOL VIEW

• PLATFORM •

Granite in kitchen countertop.

• WALL & FLOOR TILES •

Wall tiles up to full height and floor tiles made in Bangladesh.

• WATERLINE •

C.P fittings & Accessories made in Bangladesh.

• KITCHEN HOOD •

Kitchen hood will be provided in kitchen room.

• SINK •

Double bowl sink. (Customized)

• GAS CONNECTION & SAFETY •

Central LPG provision at ground floor as per plan for customer safety.

• LIFT •

01 (One) high quality 08 Passenger lift (from reputed international manufacturer as per developer's choice) to be installed with auto voltage regulator, inverter, adequate lighting, full-height photocell sensor and emergency alarm, mirrors on the wall, hand phone, stainless steel mirror etching finish on the doors at the ground floor and hairline finish on other floors.

• WELCOME LOBBY •

Highly standard welcome lobby provision as per design.

• MEZZANINE •

Mezzanine floor to host events, sitting arrangement with air condition as per design.

• INTERCOM •

Good quality and standard intercom system (Panasonic or equivalent) to connect each Apartment to the reception lobby, mezzanine floor and guard room.

• CCTV •

Will be provided in common areas of ground floor, staircase and rooftop to ensure the building security.



DREAM WOOD

APARTMENT FEATURES

FLOOR

24"x24" mirror polished (made in BD) tiles in foyer, bedrooms, living, dining cum family lounge area & all verandahs.

MAIN DOOR

Welcome to superior security and elegance with our main door, fashioned from exquisite Burma Teak standing Full Height. It ensures your safety. Personalized nameplates and effortless entry underscore convenience.

INTERNAL DOORS

Full height French polished flush door shutters with teak Chamble door frame for all internal doors except bathrooms. Round lock on all internal doors.

SLIDING DOORS & WINDOWS

Sliding glass windows and doors used as per floor plan, complete with mohair lining, rainwater barrier, and fly-proof netting.

SECURITY AND SAFETY

Elevate security with smart access control, 24/7 surveillance, visitor management, community engagement.

PAINTING

Smooth finished plastic paint on all internal walls & ceilings and weather coat on outside wall.

ELECTRICAL

Imported gang-type electrical switches (MK Origin) plug points, and other fittings. Provision for air conditioners with power points in all bedrooms, living, dining, and family lounge area as per Electrical Design.

CABLE CONNECTIONS

Concealed television & internet line in all bedrooms, formal & family lounge.

INTERNAL ELECTRICAL WIRING CABLES

BRB/Citizen/BBS or Equivalent.

DOOR

French polished flush door shutter with teak Chamble solid door frames.

SANITARY WARE

Install COTTO Standard or equivalent fittings exclusively in the master washroom, and use high-quality Bangladeshi brands for the other washrooms.

C.P FITTINGS & ACCESSORIES

C.P fittings & Accessories made in Bangladesh.

SLIDING DOORS & WINDOWS

Sliding glass windows and doors used as per floor plan, complete with mohair lining, rainwater barrier, and fly-proof netting.

SHOWER AREA

Customized shower area with curtain rail and shower enclosure as per design.

TILES

Wall tiles up to 7' Full height and floor tiles made in Bangladesh.

COUNTER TOPS & BASINS

Granite countertop customised cabinet basin in all restroom except staff bathrooms.

WATERLINE

Concealed hot & cold waterline in all washrooms.



ROOFTOP VIEW



AMENITIES IN JOLSHIRI ABASHON

CENTRAL HOSPITAL AND MEDICAL COLLEGE
MARKET / KACHA BAZAR - 13 NOS
COMMERCIAL (ICP) - 116 NOS
SUPER MALL - 02 NOS
CENTRAL BUSINESS DISTRICT (CBD)
5 STAR HOTEL
SPORTS COMPLEX
COMMUNITY CENTER - 09 NOS
FIRE FIGHTING - 02 NOS
FILLING STATION - 06 NOS
POLICE FURRY - 04 NOS
POST OFFICE
TRAFFIC STAND - 18 NOS
SERVICE CENTER - 17 NOS
DEEP TUBE WELL - 36 NOS
ELECTRIC SUB STATION - 06 NOS
TITAS GAS/LPG
WASA
BTCL AND EXCHANGE
GRAVEYARD

LAKE
LAKE DRIVE ROAD
CYCLING TRACK
WALKING TRACK
PLAY FIELD - 32 NOS
GOLF COURSE
PARK - 22 NOS
URBAN GREEN (UG) - 395 NOS
AMUSEMENT PARK - 02 NOS
CENTRAL PARK - 02 NOS
MOSQUE - 32 NOS
TEMPLE
CHURCH
NURSERY AND PRIMARY SCHOOL - 19 NOS
SECONDARY SCHOOL AND COLLEGE - 07 NOS
BANGLADESH INTERNATIONAL SCHOOL AND COLLEGE (BISC)
SHEIKH RUSSEL CANTONMENT PUBLIC SCHOOL & COLLEGE
JOLSHIRI CANTONMENT PUBLIC SCHOOL AND COLLEGE
UNIVERSITY
CLINIC - 13 NOS





MEMBER REHAB RAJUK Enlisted Enlisted CANTBOARD Enlisted

TM ASSETS LTD.

Corporate Office: Jabbar Tower, 17th Floor, 42 Gulshan Avenue, Gulshan Circle - 1, Dhaka - 1212, Tel: +88 02 8837420, +88 02 8837446, Fax: +88 02 8837446

@ info@tmassets.com.bd

www.tmassets.com.bd

in fb.com/tmassetslimited

f linkedin.com/company/tmassetsltd